

4H: GAMBELLA



The HIV/AIDS Epidemic in Gambella Region

Estimates and projections on HIV prevalence and incidence

The HIV prevalence was estimated at 4% (4.6% in females and 3.5% in males) in 2005. The HIV prevalence among the urban populations was estimated at 12.8% (14.5% in females and 11.2% in males). The corresponding estimate among the rural population was 1.9% (2.1% in females and 1.6% in males). The estimated HIV incidence was 0.21% in 2005 (0.81 % in urban and 0.18 % in rural areas). The total HIV incidence is expected to remain fairly constant in the subsequent years. However, the HIV incidence in urban areas is expected to continuously decline up to 2010. In Gambella region, the urban epidemic is characterized by a gradual increase up to 2000 followed by relative stability up to 2002 and then by gradual decline there after. On the other hand, the rural epidemic showed stability after having reached the highest levels in the year 2003. Thus, the over all HIV prevalence for the region showed a declining trend over the last few years and will remain so for the coming years too.

Estimates and projections on the number of PLWHA , new infections, new AIDS cases and deaths in adults

A total of 5, 420 persons were estimated to be living with HIV/AIDS in the year 2005. The corresponding figures for estimated numbers of new HIV infections, new AIDS cases and AIDS deaths were 431, 521 and 483 respectively The estimated number of persons requiring ART for 2005 was 1, 067.

Estimates and projections on the numbers of HIV positive pregnancies and HIV positive births

There were 356 HIV-positive pregnancies in the region in 2005. Similarly, there were 103 HIV positive births in 2005. The numbers of HIV positive pregnancies will remain relatively stable while the total number of HIV positive births will decline in the coming five years. The later will be due to the effects of the PMTCT program

Estimates and projections on the numbers of PLWHA, new infections, new AIDS cases and deaths in children

It is estimated that there were a total of 380 children living with HIV, 103 new HIV infections, 68 new AIDS cases and 66 AIDS deaths among children in the region in 2005.

Estimates and projection on the numbers of AIDS orphans

It was estimated that there were a total of 12, 796 orphans in the region in 2005. Of these, were 1, 699 were AIDS orphans. Of the AIDS orphans, nearly one third (546) were dual orphans.

Table 4H1. Major HIV Indicators, Gambella

All Ages							
	2004	2005	2006	2007	2008	2009	2010
Adult prevalence (%)							
Total	4.3	4.0	3.8	3.5	3.2	3.0	2.8
Female	4.8	4.6	4.3	4.0	3.7	3.4	3.1
Male	3.7	3.5	3.3	3.0	2.8	2.6	2.4
HIV-pos population							
Total	5,477	5,420	5,308	5,246	5,178	5,142	5,157
Males	2,449	2,427	2,380	2,357	2,330	2,317	2,326
Females	3,028	2,993	2,928	2,889	2,848	2,825	2,831
HIV-pos pregnant women	363	356	345	338	331	326	326
Annual HIV-pos births	106	103	88	77	65	62	61
New HIV infections							
Total	464	431	404	384	369	367	365
Males	227	211	196	183	173	170	170
Females	237	220	208	201	196	197	195
Adult HIV incidence (%)	0.24	0.21	0.20	0.19	0.19	0.19	0.18
New AIDS cases							
Total	489	521	536	539	534	521	505
Males	229	240	245	243	240	235	228
Females	260	281	291	296	294	286	277
Annual AIDS deaths							
Total	444	483	412	405	369	317	353
Males	211	226	189	186	167	144	159
Females	233	257	223	219	202	173	194
Population increase	4,892	4,985	5,201	5,359	5,532	5,359	5,201
ART needs	1,018	1,067	1,091	1,173	1,253	1,351	1,448
Children (0-14 yrs)							
	2004	2005	2006	2007	2008	2009	2010
HIV population							
Total	355	380	399	419	432	443	445
Males	180	193	203	214	220	226	227
Females	175	187	196	205	212	217	218
New HIV infections							
Total	106	103	88	77	65	62	61
Males	54	52	45	39	33	31	31
Females	52	51	43	38	32	31	30
New AIDS cases							
Total	67	68	64	59	55	53	52
Males	34	35	33	30	28	27	27
Females	33	33	31	29	27	26	25
Annual AIDS deaths							
Total	66	66	52	47	42	47	48
Males	33	33	26	24	21	24	24
Females	33	33	26	23	21	23	24
ART Needs	138	134	126	130	137	147	105
Orphans (0-17 yrs)							
	2004	2005	2006	2007	2008	2009	2010
Maternal orphans							
AIDS	1,002	1,220	1,405	1,576	1,710	1,765	1,832
Non-AIDS	5,008	5,005	4,989	4,959	4,919	4,870	4,813
Total	6,010	6,225	6,394	6,535	6,629	6,635	6,645
Paternal orphans							
AIDS	857	1,025	1,203	1,370	1,515	1,580	1,649
Non-AIDS	7,086	7,148	7,202	7,236	7,258	7,261	7,250
Total	7,943	8,173	8,405	8,606	8,773	8,841	8,899
Dual orphans							
AIDS	447	546	641	726	795	820	845
Non-AIDS	1,055	1,054	1,049	1,040	1,026	1,008	986
Total	1,502	1,600	1,690	1,766	1,821	1,828	1,831
Total orphans	12,451	12,798	13,109	13,375	13,581	13,648	13,713
Total AIDS orphans	1,412	1,699	1,967	2,220	2,430	2,525	2,636

Note: Total orphans = Maternal orphans plus Paternal orphans less Dual orphans.

Figure 4H.1 : Estimated and Projected HIV Prevalence By Year Adult Population 15-49, Urban, Rural, and Total Gambella 1990-2010

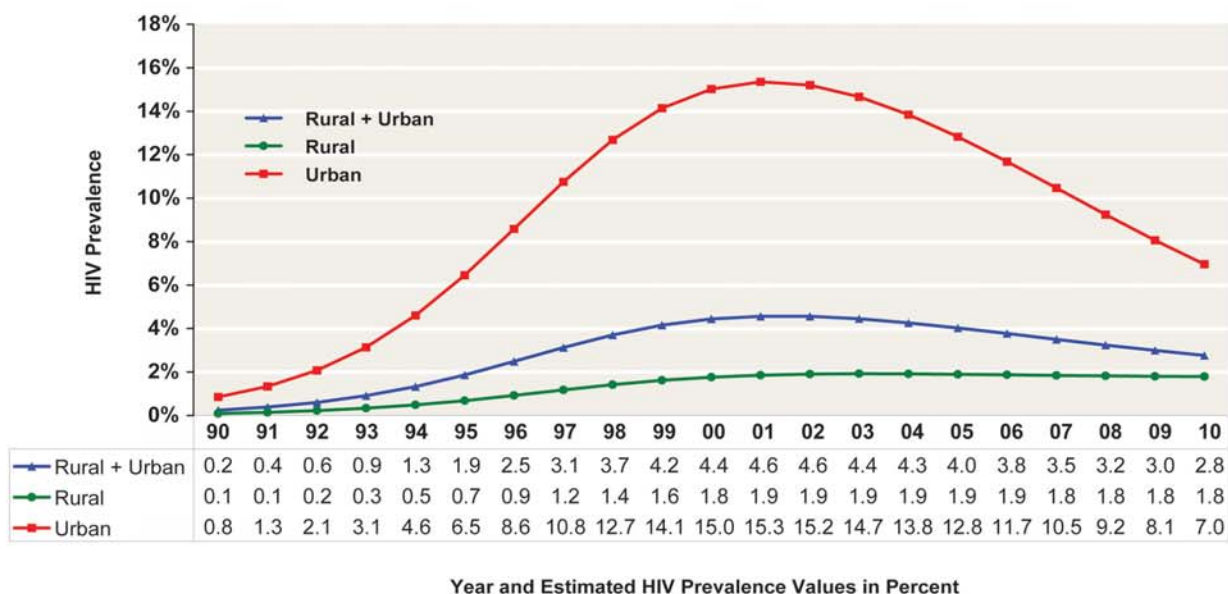


Figure 4H.2: Estimated and Projected Number of New HIV infections, New AIDS Cases, and Annual AIDS Deaths By Year, All Ages, Total Gambella

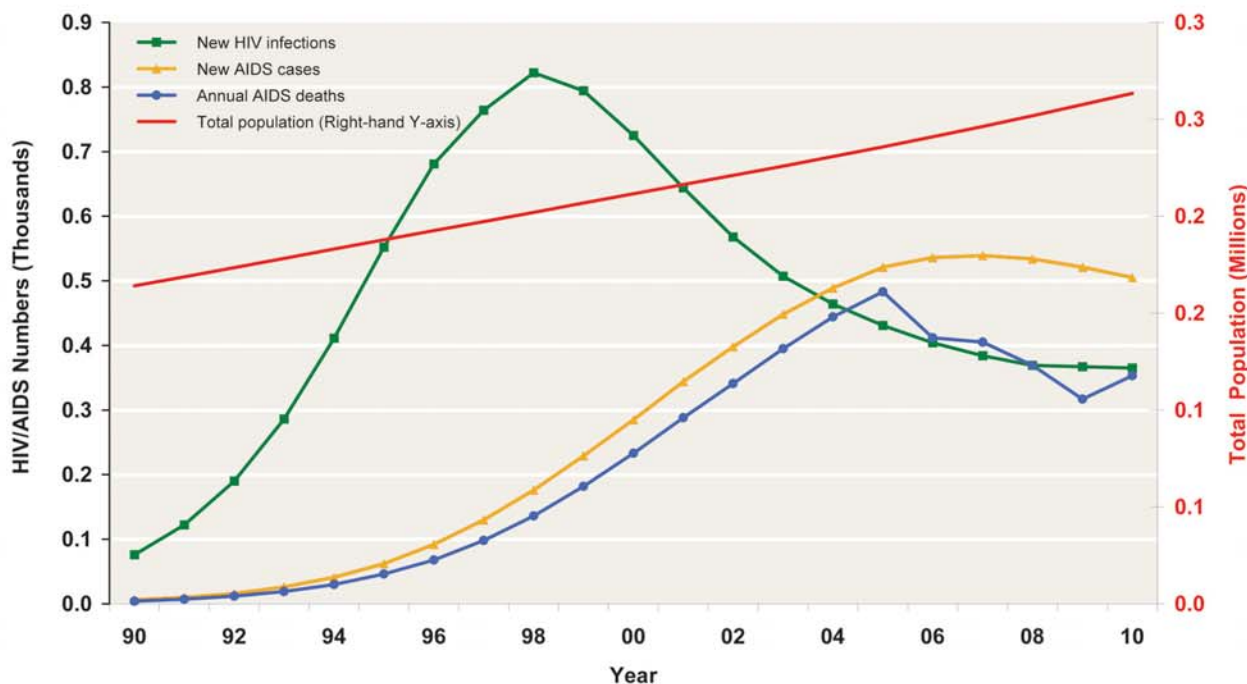


Table 4H2. Major HIV Indicators, Gambella Urban

All Ages							
	2004	2005	2006	2007	2008	2009	2010
Adult prevalence (%)							
Total	13.8	12.8	11.7	10.5	9.2	8.1	7.0
Female	15.6	14.5	13.2	11.8	10.5	9.1	7.9
Male	12.0	11.2	10.2	9.1	8.0	7.0	6.0
HIV-pos population							
Total	3,446	3,356	3,220	3,120	3,003	2,902	2,836
Males	1,546	1,509	1,450	1,409	1,359	1,316	1,288
Females	1,900	1,847	1,770	1,711	1,644	1,586	1,548
HIV-pos pregnant women	223	215	204	195	186	178	173
Annual HIV-pos births	64	61	49	41	33	30	29
New HIV infections							
Total	257	222	192	164	143	131	120
Males	129	112	96	81	69	62	58
Females	128	110	96	83	74	69	62
Adult HIV incidence (%)	1.02	0.81	0.68	0.56	0.47	0.41	0.35
New AIDS cases							
Total	314	332	338	336	328	314	297
Males	147	153	154	151	146	140	133
Females	167	179	184	185	182	174	164
Annual AIDS deaths							
Total	284	307	242	240	211	166	201
Males	135	144	111	110	95	75	90
Females	149	163	131	130	116	91	111
Population increase	1,628	1,682	1,833	1,924	2,043	1,924	1,833
ART needs	653	680	689	748	798	859	928
Children (0-14 yrs)							
	2004	2005	2006	2007	2008	2009	2010
HIV population							
Total	218	232	241	251	256	259	257
Males	110	118	122	128	130	132	131
Females	108	114	119	123	126	127	126
New HIV infections							
Total	64	61	49	41	33	30	29
Males	33	31	25	21	17	15	15
Females	31	30	24	20	16	15	14
New AIDS cases							
Total	41	41	37	33	30	28	27
Males	21	21	19	17	15	14	14
Females	20	20	18	16	15	14	13
Annual AIDS deaths							
Total	40	39	28	25	22	24	24
Males	20	20	14	13	11	12	12
Females	20	19	14	12	11	12	12
ART Needs	84	80	73	76	79	84	55
Orphans (0-17 yrs)							
	2004	2005	2006	2007	2008	2009	2010
Maternal orphans							
AIDS	611	744	850	946	1,015	1,029	1,062
Non-AIDS	810	829	846	861	875	888	900
Total	1,421	1,573	1,696	1,807	1,890	1,917	1,962
Paternal orphans							
AIDS	494	595	703	799	878	905	941
Non-AIDS	1,068	1,113	1,163	1,207	1,250	1,287	1,322
Total	1,562	1,708	1,866	2,006	2,128	2,192	2,263
Dual orphans							
AIDS	255	316	376	431	474	485	500
Non-AIDS	122	126	130	133	136	137	138
Total	377	442	506	564	610	622	638
Total orphans	2,606	2,839	3,056	3,249	3,408	3,487	3,587
Total AIDS orphans	850	1,023	1,177	1,314	1,419	1,449	1,503

Note: Total orphans = Maternal orphans plus Paternal orphans less Dual orphans.

Figure 4H.3: Projected Annual No. of Patients Needing ART, by Sex and Age Group, 2005- 2010, Gambella Urban

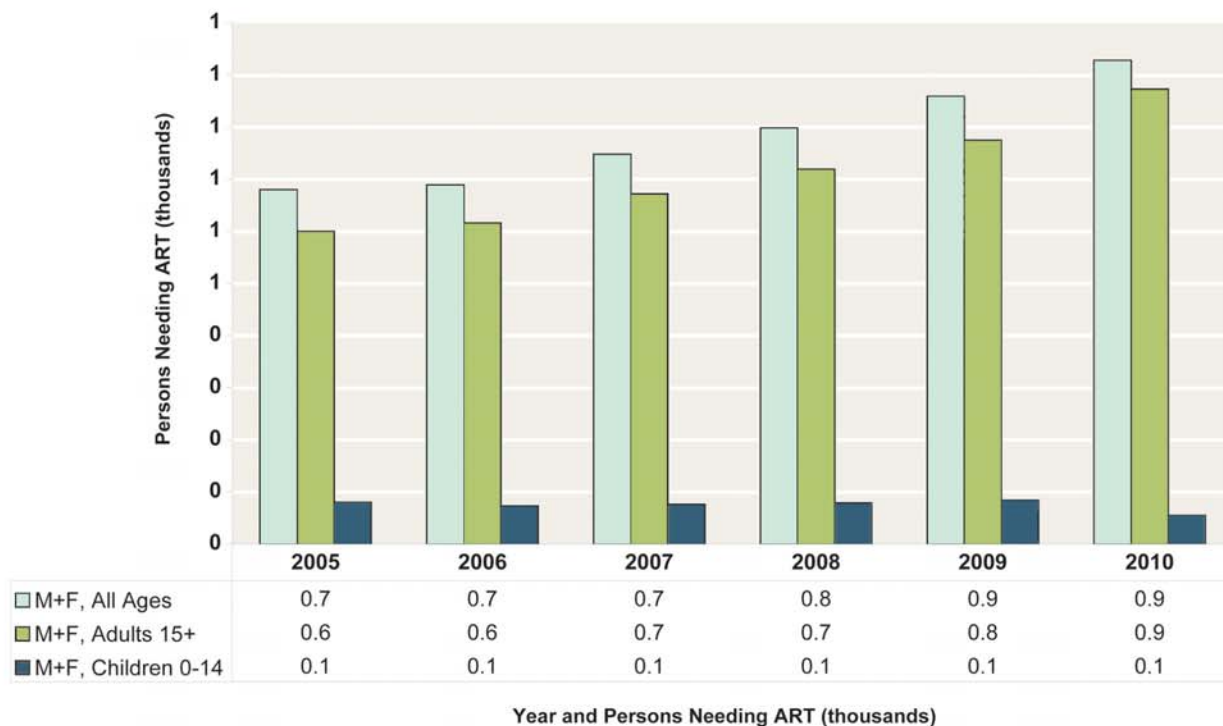


Figure 4H.4: Estimated and Projected Number of New HIV infections, New AIDS Cases, and Annual AIDS Deaths By Year, All Ages, Gambella Urban

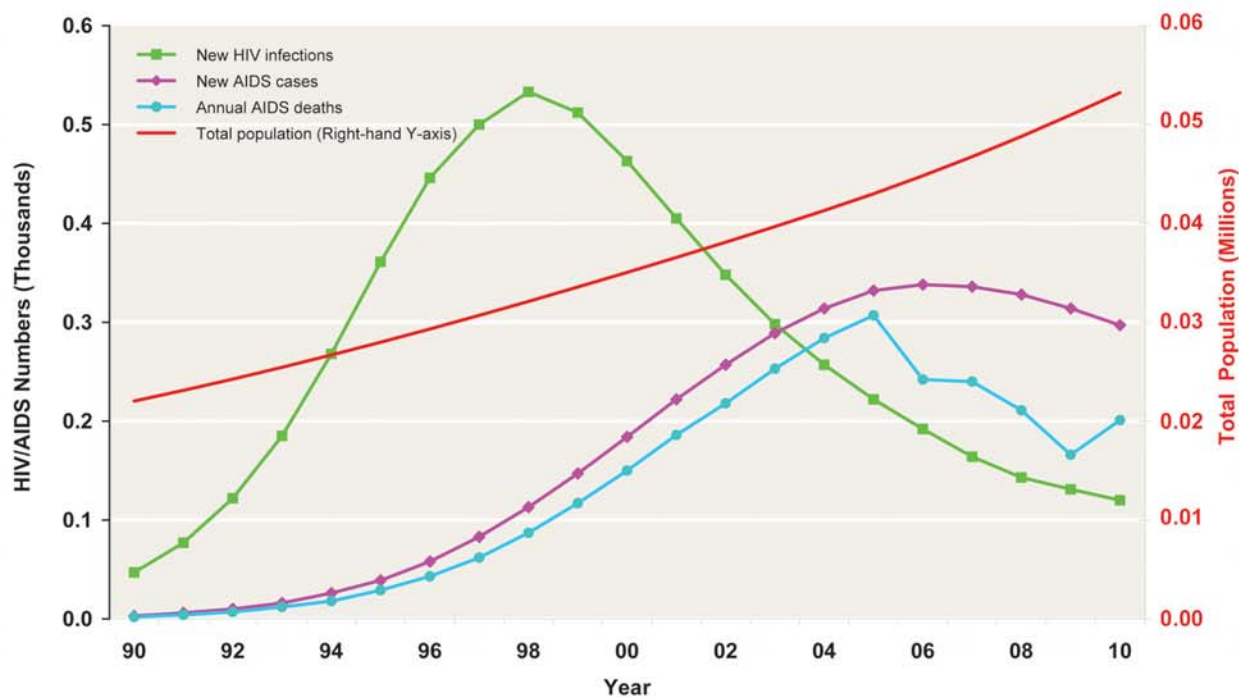
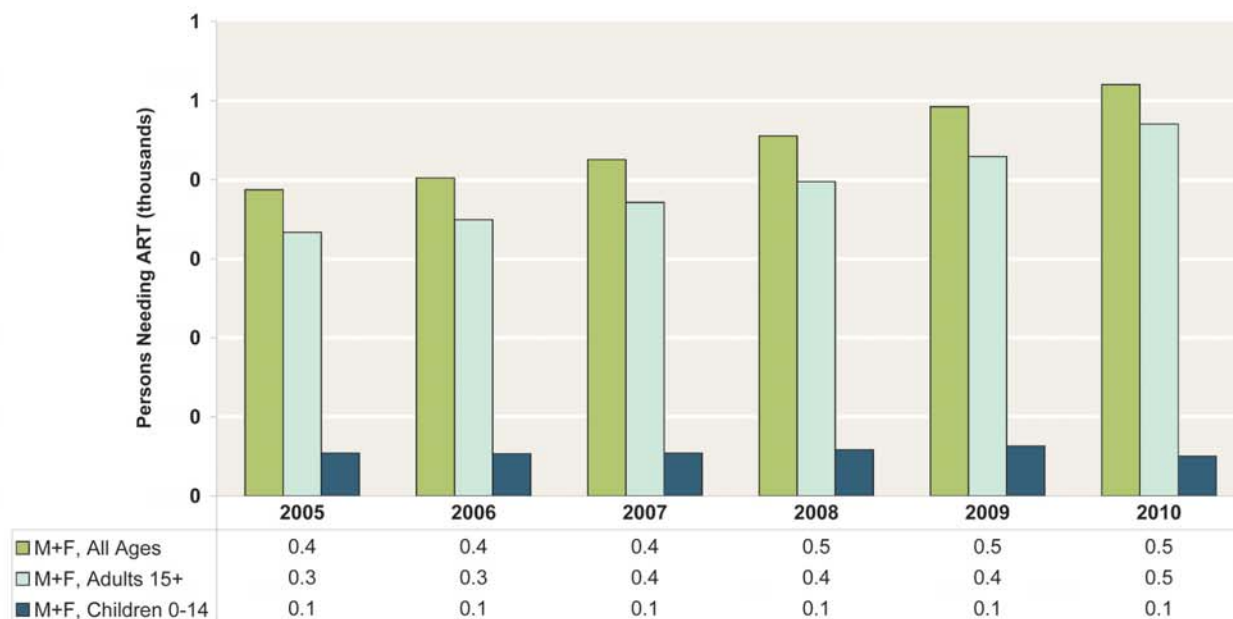


Table 4H3. Major HIV Indicators, Gambella Rural

All Ages							
	2004	2005	2006	2007	2008	2009	2010
Adult prevalence (%)							
Total	1.9	1.9	1.9	1.8	1.8	1.8	1.8
Female	2.2	2.1	2.1	2.1	2.1	2.0	2.0
Male	1.7	1.6	1.6	1.6	1.6	1.6	1.6
HIV-pos population							
Total	2,031	2,064	2,088	2,126	2,175	2,240	2,321
Males	903	918	930	948	971	1,001	1,038
Females	1,128	1,146	1,158	1,178	1,204	1,239	1,283
HIV-pos pregnant women	140	141	141	143	145	148	153
Annual HIV-pos births	42	42	39	36	32	32	32
New HIV infections							
Total	207	209	212	220	226	236	245
Males	98	99	100	102	104	108	112
Females	109	110	112	118	122	128	133
Adult HIV incidence (%)	0.18	0.18	0.18	0.19	0.20	0.21	0.21
New AIDS cases							
Total	175	189	198	203	206	207	208
Males	82	87	91	92	94	95	95
Females	93	102	107	111	112	112	113
Annual AIDS deaths							
Total	160	176	170	165	158	151	152
Males	76	82	78	76	72	69	69
Females	84	94	92	89	86	82	83
Population increase	3,264	3,303	3,368	3,435	3,489	3,435	3,368
ART needs	365	387	402	425	455	492	520
Children (0-14 yrs)							
	2004	2005	2006	2007	2008	2009	2010
HIV population							
Total	137	148	158	168	176	184	188
Males	70	75	81	86	90	94	96
Females	67	73	77	82	86	90	92
New HIV infections							
Total	42	42	39	36	32	32	32
Males	21	21	20	18	16	16	16
Females	21	21	19	18	16	16	16
New AIDS cases							
Total	26	27	27	26	25	25	25
Males	13	14	14	13	13	13	13
Females	13	13	13	13	12	12	12
Annual AIDS deaths							
Total	26	27	24	22	20	23	24
Males	13	13	12	11	10	12	12
Females	13	14	12	11	10	11	12
ART Needs	54	54	53	54	58	63	50
Orphans (0-17 yrs)							
	2004	2005	2006	2007	2008	2009	2010
Maternal orphans							
AIDS	391	476	555	630	695	736	770
Non-AIDS	4,198	4,176	4,143	4,098	4,044	3,982	3,913
Total	4,589	4,652	4,698	4,728	4,739	4,718	4,683
Paternal orphans							
AIDS	363	430	500	571	637	675	708
Non-AIDS	6,018	6,035	6,039	6,029	6,008	5,974	5,928
Total	6,381	6,465	6,539	6,600	6,645	6,649	6,636
Dual orphans							
AIDS	192	230	265	295	321	335	345
Non-AIDS	933	928	919	907	890	871	848
Total	1,125	1,158	1,184	1,202	1,211	1,206	1,193
Total orphans	9,845	9,959	10,053	10,126	10,173	10,161	10,126
Total AIDS orphans	562	676	790	906	1,011	1,076	1,133

Note: Total orphans = Maternal orphans plus Paternal orphans less Dual orphans.

Figure 4H.5: Projected Annual No. of Patients Needing ART, by Sex and Age Group, 2005- 2010, Gambella Rural



Year and Persons Needing ART (thousands)

(Figures rounded and may not add up to total)

Figure 4H.6: Estimated and Projected Number of New HIV infections, New AIDS Cases, and Annual AIDS Deaths By Year, All Ages, Gambella Rural

