

4I: HARARI



The HIV/AIDS Epidemic in Harari Region

Estimates and projections on HIV prevalence and incidence

The HIV prevalence was estimated at 5.2 % (5.9% in females and 4.5% in males) in 2005. The HIV prevalence among the urban populations was estimated at 7.3% (8.3% in females and 6.4 % in males). The corresponding estimate among the rural population was 0.6 % (0.7% in females and 0.5 % in males). The estimated HIV incidence was 0.44% in 2005 (0.76 % in urban and 0.04 % in rural areas). The total HIV incidence is expected to slowly increase to its level in 2010 (0.5%) in line with the adult HIV incidence in urban areas of the region. In Harari region, the urban epidemic is characterized by a gradual increase up to 1995 and by relative stability up to 1998 and then by gradual decline there after. On the other hand, the rural epidemic showed stability after having reached the highest levels in the year 1998 followed by a declining trend after 2003. Thus, the over all HIV prevalence for the region has been declining over the last years and will remain so for the coming few years.

Estimates and projections on the number of PLWHA , new infections, new AIDS cases and deaths in adults

A total of 5, 236 persons were estimated to be living with HIV/AIDS in the year 2005. The corresponding figures for estimated numbers of new HIV infections, new AIDS cases and AIDS deaths were 490, 570 and 563 respectively The estimated number of persons requiring ART for 2005 was 1, 172.

Estimates and projections on the numbers of HIV positive pregnancies and births

There were 276 HIV-positive pregnancies in the region in 2005. Similarly, there were 67 HIV positive births in 2005. The numbers of HIV positive pregnancies will keep on increasing while the total number of HIV positive births will decline in the coming five years. The later will be due to the effects of the PMTCT program

Estimates and projections on the numbers of PLWHA, new infections, new AIDS cases and deaths in children

It is estimated that there were a total of 405 children living with HIV, 67 new HIV infections, 55 new AIDS cases and 51 AIDS deaths among children in the region in 2005.

Estimates and projections on the numbers of AIDS orphans

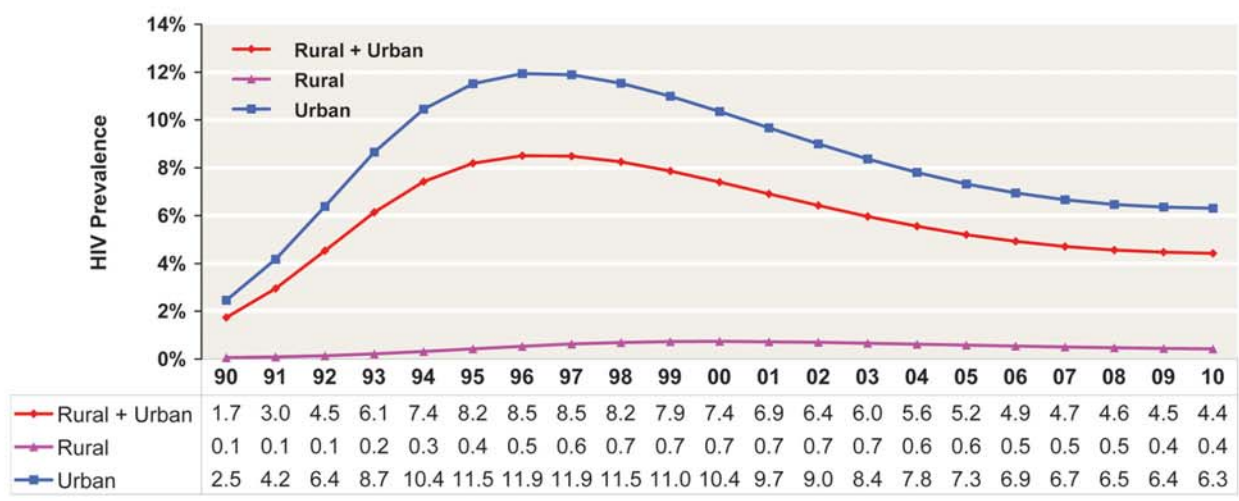
It was estimated that there were a total of 12, 038 orphans in the region in 2005. Of these, were 3, 008 AIDS orphans. Of the AIDS orphans, nearly one third (984) were dual orphans.

Table 4I1. Major HIV Indicators, Harari

All Ages							
	2004	2005	2006	2007	2008	2009	2010
Adult prevalence (%)							
Total	5.6	5.2	4.9	4.7	4.6	4.5	4.4
Female	6.3	5.9	5.6	5.3	5.2	5.1	5.0
Male	4.8	4.5	4.3	4.1	4.0	3.9	3.8
HIV-pos population							
Total	5,355	5,236	5,164	5,281	5,533	5,867	6,167
Males	2,404	2,354	2,322	2,378	2,491	2,641	2,778
Females	2,951	2,882	2,842	2,903	3,042	3,226	3,389
HIV-pos pregnant women	284	276	273	279	292	310	326
Annual HIV-pos births	72	67	55	45	40	41	43
New HIV infections							
Total	469	490	512	541	570	598	619
Males	212	220	230	244	259	272	281
Females	257	270	282	297	311	326	338
Adult HIV incidence (%)	0.43	0.44	0.45	0.47	0.49	0.49	0.50
New AIDS cases							
Total	592	570	542	514	490	475	466
Males	263	255	245	236	228	224	222
Females	329	315	297	278	262	251	244
Annual AIDS deaths							
Total	577	563	403	295	237	290	331
Males	256	250	181	132	107	132	152
Females	321	313	222	163	130	158	179
Population increase	4,617	4,796	5,136	5,442	5,676	5,442	5,136
ART needs	1,203	1,172	1,137	1,207	1,349	1,528	1,585
Children (0-14 yrs)							
HIV population	2004	2005	2006	2007	2008	2009	2010
Total	397	405	408	413	416	417	412
Males	203	208	209	212	213	213	212
Females	194	197	199	201	203	204	200
New HIV infections							
Total	72	67	55	45	40	41	43
Males	36	34	28	23	20	21	22
Females	36	33	27	22	20	20	21
New AIDS cases							
Total	56	55	51	47	43	42	41
Males	28	28	26	24	22	22	22
Females	28	27	25	23	21	20	19
Annual AIDS deaths							
Total	52	51	34	25	20	25	27
Males	26	26	18	12	10	12	13
Females	26	25	16	13	10	13	14
ART Needs	118	115	110	118	135	154	83
Orphans (0-17 yrs)							
Maternal orphans	2004	2005	2006	2007	2008	2009	2010
AIDS	1,974	2,146	2,245	2,265	2,214	2,156	2,109
Non-AIDS	4,199	4,240	4,270	4,292	4,310	4,321	4,330
Total	6,173	6,386	6,515	6,557	6,524	6,477	6,439
Paternal orphans							
AIDS	1,702	1,846	1,996	2,082	2,083	2,048	2,021
Non-AIDS	5,665	5,750	5,827	5,893	5,947	5,991	6,030
Total	7,367	7,596	7,823	7,975	8,030	8,039	8,051
Dual orphans							
AIDS	897	984	1,058	1,091	1,073	1,036	999
Non-AIDS	950	960	967	969	972	969	965
Total	1,847	1,944	2,025	2,060	2,045	2,005	1,964
Total orphans	11,693	12,038	12,313	12,472	12,509	12,511	12,526
Total AIDS orphans	2,779	3,008	3,183	3,256	3,224	3,168	3,131

Note: Total orphans = Maternal orphans plus Paternal orphans less Dual orphans.

Figure 4I.1 : Estimated and Projected HIV Prevalence By Year Adult Population 15-49, Urban, Rural, and Total Harari 1990-2010



Year and Estimated HIV Prevalence Values in Percent

Figure 4I.2: Estimated and Projected Number of New HIV infections, New AIDS Cases, and Annual AIDS Deaths By Year, All Ages, Total Harari

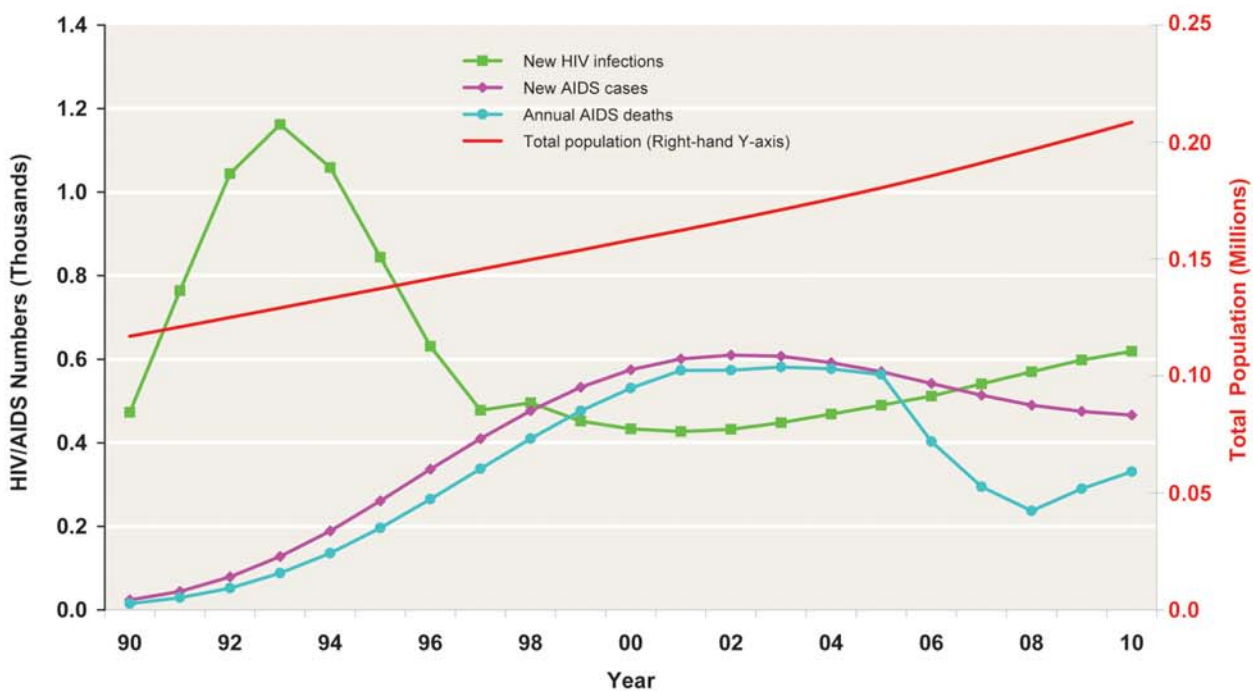


Table 4I2. Major HIV Indicators, Harari Urban

All Ages							
	2004	2005	2006	2007	2008	2009	2010
Adult prevalence (%)							
Total	7.8	7.3	6.9	6.7	6.5	6.4	6.3
Female	8.8	8.3	7.9	7.5	7.3	7.2	7.1
Male	6.8	6.4	6.0	5.8	5.6	5.5	5.5
HIV-pos population							
Total	5,115	5,005	4,942	5,062	5,317	5,651	5,949
Males	2,297	2,250	2,223	2,280	2,395	2,545	2,680
Females	2,818	2,755	2,719	2,782	2,922	3,106	3,269
HIV-pos pregnant women	261	254	252	259	272	290	306
Annual HIV-pos births	65	61	50	41	36	37	39
New HIV infections							
Total	449	471	494	523	551	578	598
Males	203	211	221	236	250	263	272
Females	246	260	273	287	301	315	326
Adult HIV incidence (%)	0.74	0.76	0.79	0.83	0.85	0.87	0.87
New AIDS cases							
Total	567	545	517	489	467	453	445
Males	252	244	234	225	217	214	212
Females	315	301	283	264	250	239	233
Annual AIDS deaths							
Total	553	538	384	276	220	275	314
Males	245	239	172	124	100	126	145
Females	308	299	212	152	120	149	169
Population increase	3,180	3,321	3,619	3,882	4,074	3,882	3,619
ART needs	1,151	1,121	1,086	1,154	1,293	1,469	1,525
Children (0-14 yrs)							
	2004	2005	2006	2007	2008	2009	2010
HIV population							
Total	373	380	383	387	390	391	387
Males	191	195	196	199	200	200	199
Females	182	185	187	188	190	191	188
New HIV infections							
Total	65	61	50	41	36	37	39
Males	33	31	25	21	18	19	20
Females	32	30	25	20	18	18	19
New AIDS cases							
Total	52	51	47	43	40	39	38
Males	26	26	24	22	20	20	20
Females	26	25	23	21	20	19	18
Annual AIDS deaths							
Total	48	47	31	22	18	22	24
Males	24	24	16	11	9	11	12
Females	24	23	15	11	9	11	12
ART Needs	109	107	102	110	126	144	77
Orphans (0-17 yrs)							
	2004	2005	2006	2007	2008	2009	2010
Maternal orphans							
AIDS	1,897	2,056	2,145	2,156	2,099	2,040	1,991
Non-AIDS	1,633	1,640	1,639	1,633	1,624	1,611	1,596
Total	3,530	3,696	3,784	3,789	3,723	3,651	3,587
Paternal orphans							
AIDS	1,633	1,767	1,906	1,983	1,977	1,940	1,911
Non-AIDS	2,264	2,303	2,337	2,362	2,377	2,383	2,385
Total	3,897	4,070	4,243	4,345	4,354	4,323	4,296
Dual orphans							
AIDS	866	948	1,017	1,045	1,024	986	947
Non-AIDS	260	262	262	260	258	252	247
Total	1,126	1,210	1,279	1,305	1,282	1,238	1,194
Total orphans	6,301	6,556	6,748	6,829	6,795	6,736	6,689
Total AIDS orphans	2,664	2,875	3,034	3,094	3,052	2,994	2,955

Note: Total orphans = Maternal orphans plus Paternal orphans less Dual orphans.

Figure 4I.3: Projected Annual No. of Patients Needing ART, by Sex and Age Group, 2005- 2010, Harari Urban

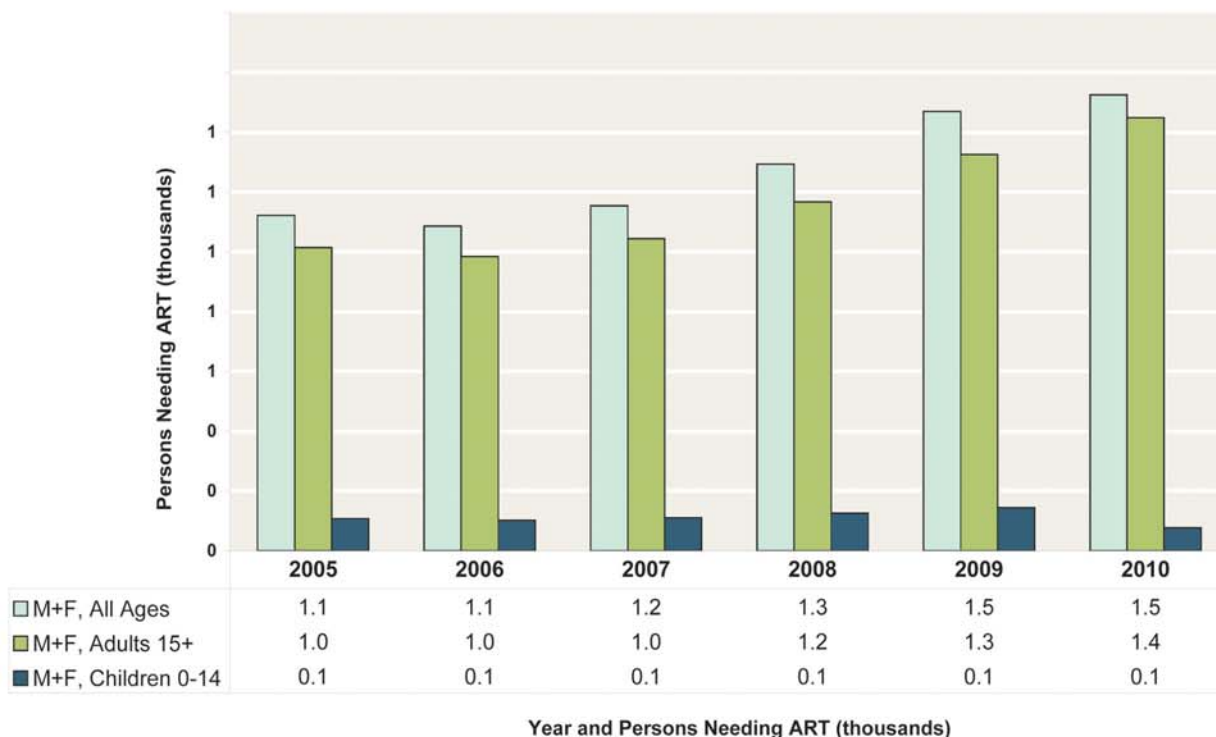


Figure 4I.4: Estimated and Projected Number of New HIV infections, New AIDS Cases, and Annual AIDS Deaths By Year, All Ages, Harari Urban

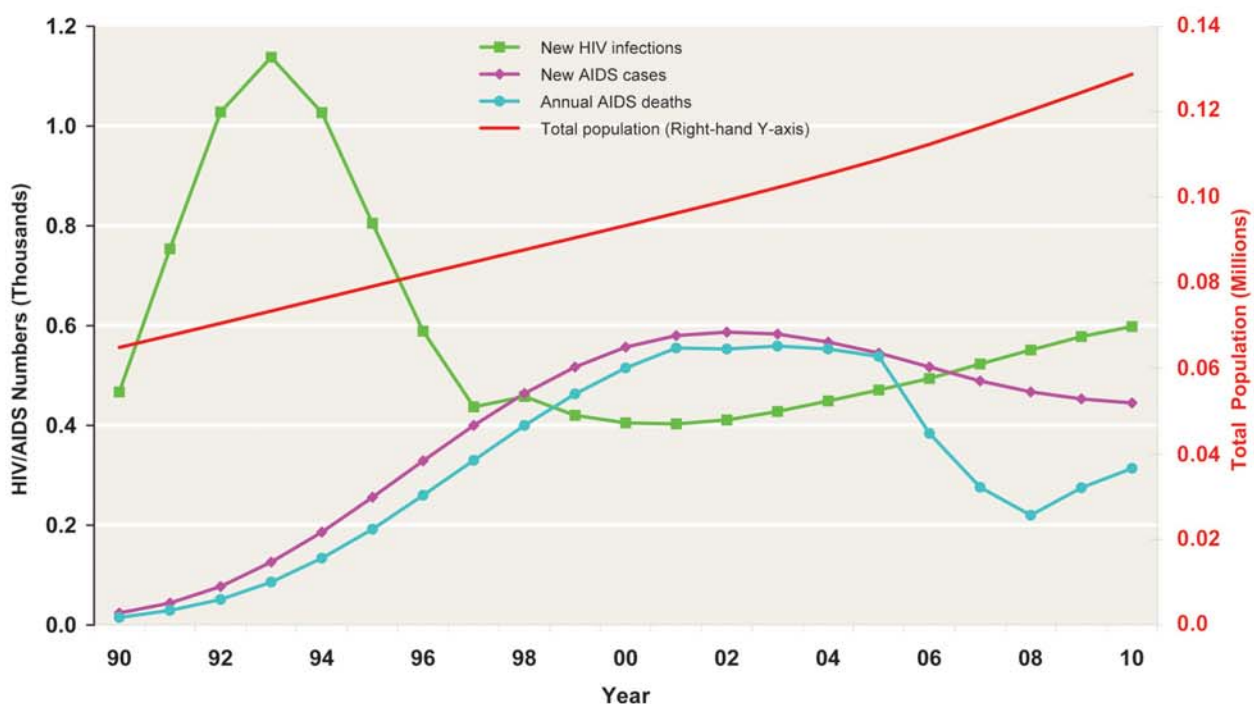
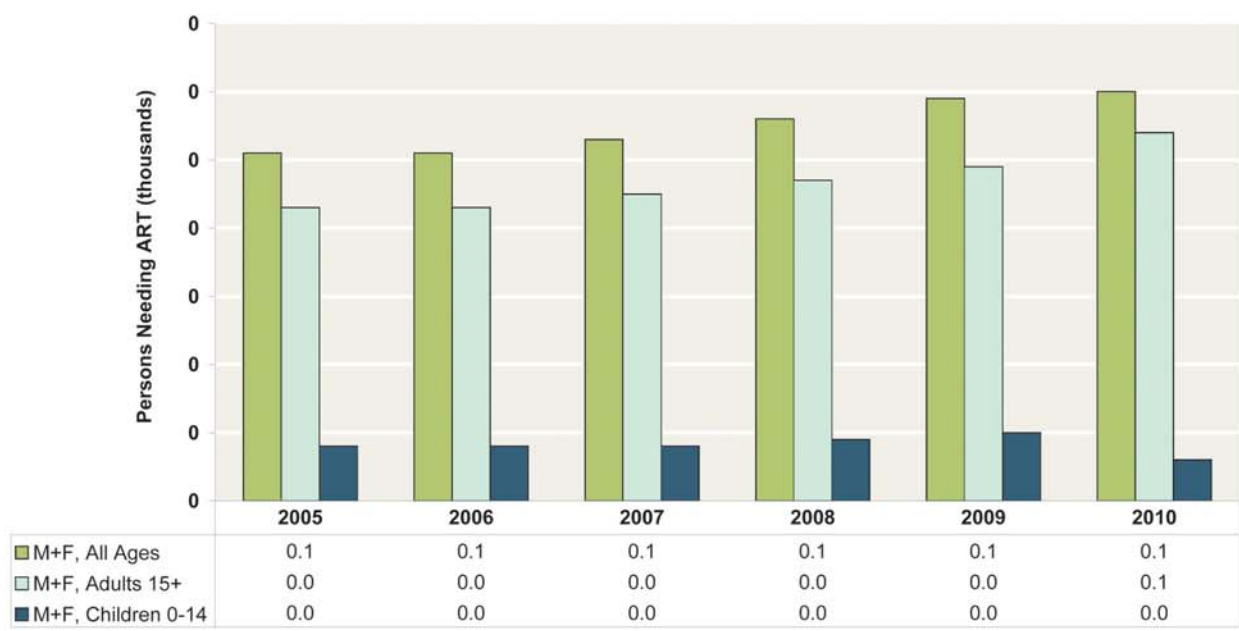


Table 4I3. Major HIV Indicators, Harari Rural

All Ages							
	2004	2005	2006	2007	2008	2009	2010
Adult prevalence (%)							
Total	0.6	0.6	0.5	0.5	0.5	0.4	0.4
Female	0.7	0.7	0.6	0.6	0.5	0.5	0.5
Male	0.5	0.5	0.5	0.4	0.4	0.4	0.4
HIV-pos population							
Total	240	231	222	219	216	216	218
Males	107	104	99	98	96	96	98
Females	133	127	123	121	120	120	120
HIV-pos pregnant women	23	22	21	20	20	20	20
Annual HIV-pos births	7	6	5	4	4	4	4
New HIV infections							
Total	20	19	18	18	19	20	21
Males	9	9	9	8	9	9	9
Females	11	10	9	10	10	11	12
Adult HIV incidence (%)	0.04	0.04	0.04	0.04	0.04	0.04	0.05
New AIDS cases							
Total	25	25	25	25	23	22	21
Males	11	11	11	11	11	10	10
Females	14	14	14	14	12	12	11
Annual AIDS deaths							
Total	24	25	19	19	17	15	17
Males	11	11	9	8	7	6	7
Females	13	14	10	11	10	9	10
Population increase	1,437	1,475	1,517	1,560	1,602	1,560	1,517
ART needs	52	51	51	53	56	59	60
Children (0-14 yrs)							
	2004	2005	2006	2007	2008	2009	2010
HIV population							
Total	24	25	25	26	26	26	25
Males	12	13	13	13	13	13	13
Females	12	12	12	13	13	13	12
New HIV infections							
Total	7	6	5	4	4	4	4
Males	3	3	3	2	2	2	2
Females	4	3	2	2	2	2	2
New AIDS cases							
Total	4	4	4	4	3	3	3
Males	2	2	2	2	2	2	2
Females	2	2	2	2	1	1	1
Annual AIDS deaths							
Total	4	4	3	3	2	3	3
Males	2	2	2	1	1	1	1
Females	2	2	1	2	1	2	2
ART Needs	9	8	8	8	9	10	6
Orphans (0-17 yrs)							
	2004	2005	2006	2007	2008	2009	2010
Maternal orphans							
AIDS	77	90	100	109	115	116	118
Non-AIDS	2,566	2,600	2,631	2,659	2,686	2,710	2,734
Total	2,643	2,690	2,731	2,768	2,801	2,826	2,852
Paternal orphans							
AIDS	69	79	90	99	106	108	110
Non-AIDS	3,401	3,447	3,490	3,531	3,570	3,608	3,645
Total	3,470	3,526	3,580	3,630	3,676	3,716	3,755
Dual orphans							
AIDS	31	36	41	46	49	50	52
Non-AIDS	690	698	705	709	714	717	718
Total	721	734	746	755	763	767	770
Total orphans	5,392	5,482	5,565	5,643	5,714	5,775	5,837
Total AIDS orphans	115	133	149	162	172	174	176

Note: Total orphans = Maternal orphans plus Paternal orphans less Dual orphans.

Figure 4I.5: Projected Annual No. of Patients Needing ART, by Sex and Age Group, 2005- 2010, Harari Rural



Year and Persons Needing ART (thousands)
(Figures rounded and may not add up to total)

Figure 4I.6: Estimated and Projected Number of New HIV infections, New AIDS Cases, and Annual AIDS Deaths By Year, All Ages, Harari Rural

