

4B: AFAR



The HIV/AIDS Epidemic in Afar Region

Estimates and projections on HIV prevalence and incidence

The HIV prevalence for Afar was estimated at 3.1% (3.5% for females and 2.7% for males) in 2005. HIV prevalence for urban populations was estimated at 14.1% (15.9% for females and 12.3% for males) while it was 1.8% for rural populations (2.1% for females and 1.6% for males). The estimated total HIV incidence for Afar region in 2005 was 0.22% and it is projected to slowly increase to 0.27% in the coming five years. In Afar, the urban epidemic is projected to stabilize for the coming 5 years after showing an increasing trend over the last years. On the other hand, the rural epidemic showed stabilization in the last few years after reaching its highest levels in the year 1999/2000. Thus, the over all HIV prevalence for the region is expected to remain relatively stable in the coming five years.

Estimates and projections the on the number of PLWHA, new infections, new AIDS cases and deaths in adults

A total of 22,287 persons living with HIV/AIDS, 2, 110 new HIV infections and 2, 358 new AIDS cases were living in the region in 2005. The corresponding figures for annual AIDS deaths and. the number of persons requiring ART were 2, 316 and 4, 727 respectively.

Estimates and projections on the numbers of HIV positive pregnancies and births

There were estimated total of 1,549 HIV-positive pregnant women and 452 HIV positive births in the region in 2005. Although the numbers of HIV positive pregnancies in the region is expected to increase, the number of HIV positive births will decline in the coming five years. The decline in the number of HIV positive births will mainly depend on the extent of expansion in PMTCT service in the region.

Estimates and projections on the numbers of PLWHA, new infections, new AIDS cases and deaths in children

It was estimated that there were a total of 1,996 children living with HIV, 452 new HIV infections, 322 new AIDS cases, and 312 AIDS deaths among children 0-14 years in the region in 2005.

Estimates and projections on the number of AIDS orphans

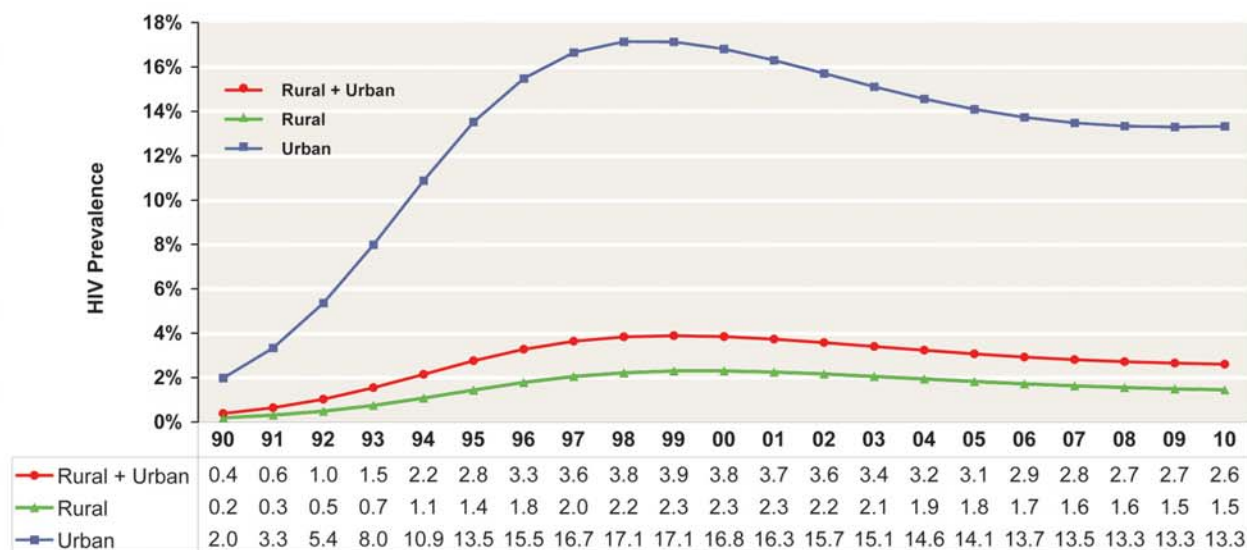
It was estimated that there were a total of 81, 121 orphans in the region in 2005. Of these, 10,089 were AIDS orphans. Of the AIDS orphans, the majority (8, 792) were maternal orphans.

Table 4B1. Major HIV Indicators, Afar

All Ages							
	2004	2005	2006	2007	2008	2009	2010
Adult prevalence (%)							
Total	3.2	3.1	2.9	2.8	2.7	2.7	2.6
Female	3.7	3.5	3.3	3.2	3.1	3.0	2.9
Male	2.8	2.7	2.5	2.4	2.4	2.3	2.3
HIV-pos population							
Total	22,621	22,287	22,019	22,208	22,620	23,343	24,380
Males	10,132	10,003	9,901	10,003	10,202	10,538	11,013
Females	12,489	12,284	12,118	12,205	12,418	12,805	13,367
HIV-pos pregnant women	1,597	1,549	1,511	1,504	1,512	1,544	1,601
Annual HIV-pos births	469	452	398	352	310	303	303
New HIV infections							
Total	2,029	2,110	2,202	2,296	2,395	2,528	2,633
Males	959	984	1,011	1,046	1,086	1,146	1,196
Females	1,070	1,126	1,191	1,250	1,309	1,382	1,437
Adult HIV incidence (%)	0.22	0.22	0.23	0.25	0.25	0.26	0.27
New AIDS cases							
Total	2,336	2,358	2,331	2,277	2,208	2,153	2,114
Males	1,062	1,068	1,053	1,033	1,009	995	986
Females	1,274	1,290	1,278	1,244	1,199	1,158	1,128
Annual AIDS deaths							
Total	2,250	2,316	1,962	1,842	1,648	1,437	1,520
Males	1,033	1,053	886	832	746	658	701
Females	1,217	1,263	1,076	1,010	902	779	819
Population increase	29,631	30,336	31,569	32,506	33,436	32,506	31,569
ART needs	4,725	4,727	4,657	4,837	5,077	5,448	5,775
Children (0-14 yrs)							
	2004	2005	2006	2007	2008	2009	2010
HIV population							
Total	1,915	1,996	2,054	2,114	2,148	2,171	2,156
Males	1,007	1,051	1,083	1,115	1,134	1,146	1,139
Females	908	945	971	999	1,014	1,025	1,017
New HIV infections							
Total	469	452	398	352	310	303	303
Males	238	230	202	179	157	154	154
Females	231	222	196	173	153	149	149
New AIDS cases							
Total	322	322	308	291	273	267	266
Males	166	166	158	150	141	139	137
Females	156	156	150	141	132	128	129
Annual AIDS deaths							
Total	312	312	259	235	209	234	243
Males	161	161	133	122	108	121	126
Females	151	151	126	113	101	113	117
ART Needs	651	637	607	626	657	712	532
Orphans (0-17 yrs)							
	2004	2005	2006	2007	2008	2009	2010
Maternal orphans							
AIDS	7,647	8,792	9,712	10,462	10,984	11,063	11,102
Non-AIDS	38,818	39,010	39,121	39,150	39,121	39,042	38,908
Total	46,465	47,802	48,833	49,612	50,105	50,105	50,010
Paternal orphans							
AIDS	5,375	6,064	6,789	7,419	7,934	8,058	8,151
Non-AIDS	40,622	41,087	41,527	41,901	42,226	42,473	42,663
Total	45,997	47,151	48,316	49,320	50,160	50,531	50,814
Dual orphans							
AIDS	4,257	4,767	5,226	5,582	5,826	5,801	5,738
Non-AIDS	9,056	9,065	9,055	9,019	8,963	8,882	8,780
Total	13,313	13,832	14,281	14,601	14,789	14,683	14,518
Total orphans	79,149	81,121	82,868	84,331	85,476	85,953	86,306
Total AIDS orphans	8,765	10,089	11,275	12,299	13,092	13,320	13,515

Note: Total orphans = Maternal orphans plus Paternal orphans less Dual orphans.

Figure 4B.1 : Estimated and Projected HIV Prevalence By Year Adult Population 15-49, Urban, Rural, and Total Afar 1990-2010



Year and Estimated HIV Prevalence Values in Percent

Figure 4B.2: Estimated and Projected Number of New HIV infections, New AIDS Cases, and Annual AIDS Deaths By Year, All Ages, Total Afar

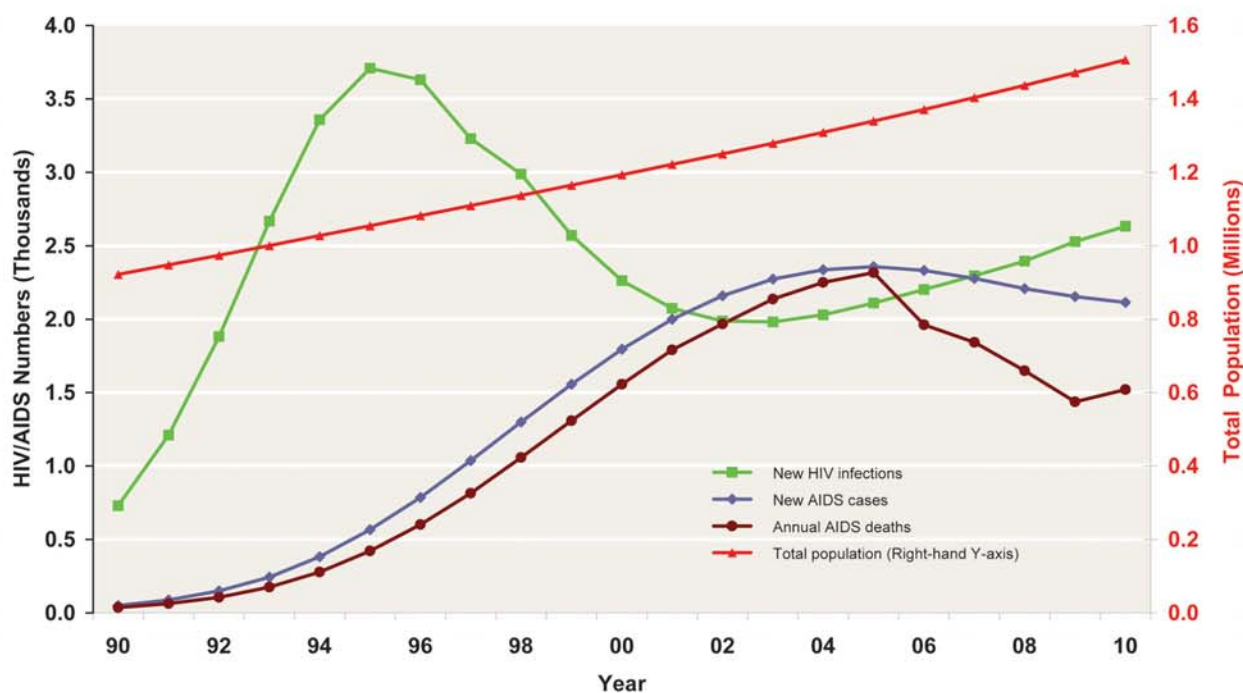


Table 4B2. Major HIV Indicators, Afar Urban

All Ages							
	2004	2005	2006	2007	2008	2009	2010
Adult prevalence (%)							
Total	14.6	14.1	13.7	13.5	13.3	13.3	13.3
Female	16.5	15.9	15.5	15.2	15.1	15.0	15.1
Male	12.7	12.3	11.9	11.7	11.6	11.6	11.6
HIV-pos population							
Total	9,463	9,489	9,582	9,963	10,425	11,044	11,824
Males	4,266	4,280	4,324	4,498	4,707	4,987	5,339
Females	5,197	5,209	5,258	5,465	5,718	6,057	6,485
HIV-pos pregnant women	576	572	574	592	615	648	690
Annual HIV-pos births	166	163	138	123	110	110	114
New HIV infections							
Total	952	1,014	1,084	1,141	1,202	1,274	1,318
Males	441	465	492	518	544	577	598
Females	511	549	592	623	658	697	720
Adult HIV incidence (%)	1.65	1.72	1.83	1.90	1.97	2.03	2.03
New AIDS cases							
Total	953	961	950	935	920	915	920
Males	435	439	434	431	427	430	435
Females	518	522	516	504	493	485	485
Annual AIDS deaths							
Total	919	941	708	685	594	474	584
Males	422	430	323	313	273	221	273
Females	497	511	385	372	321	253	311
Population increase	3,100	3,198	3,566	3,721	3,949	3,721	3,566
ART needs	1,939	1,944	1,928	2,093	2,271	2,527	2,761
Children (0-14 yrs)							
	2004	2005	2006	2007	2008	2009	2010
HIV population							
Total	718	750	772	801	816	829	830
Males	378	395	407	422	430	437	438
Females	340	355	365	379	386	392	392
New HIV infections							
Total	166	163	138	123	110	110	114
Males	84	83	70	63	56	56	58
Females	82	80	68	60	54	54	56
New AIDS cases							
Total	116	118	111	105	99	98	99
Males	60	61	57	54	51	51	51
Females	56	57	54	51	48	47	48
Annual AIDS deaths							
Total	112	114	84	79	70	80	85
Males	58	59	43	41	36	41	44
Females	54	55	41	38	34	39	41
ART Needs	239	235	223	243	261	289	198
Orphans (0-17 yrs)							
	2004	2005	2006	2007	2008	2009	2010
Maternal orphans							
AIDS	2,769	3,138	3,399	3,598	3,705	3,637	3,622
Non-AIDS	2,537	2,550	2,556	2,554	2,547	2,538	2,524
Total	5,306	5,688	5,955	6,152	6,252	6,175	6,146
Paternal orphans							
AIDS	2,187	2,441	2,728	2,937	3,084	3,056	3,050
Non-AIDS	2,674	2,706	2,741	2,755	2,761	2,749	2,728
Total	4,861	5,147	5,469	5,692	5,845	5,805	5,778
Dual orphans							
AIDS	1,343	1,540	1,734	1,877	1,968	1,930	1,903
Non-AIDS	380	380	380	376	371	362	353
Total	1,723	1,920	2,114	2,253	2,339	2,292	2,256
Total orphans	8,444	8,915	9,310	9,591	9,758	9,688	9,668
Total AIDS orphans	3,613	4,039	4,393	4,658	4,821	4,763	4,769

Note: Total orphans = Maternal orphans plus Paternal orphans less Dual orphans.

Figure 4B.3: Projected Annual No. of Patients Needing ART, by Sex and Age Group, 2005- 2010, Afar Urban

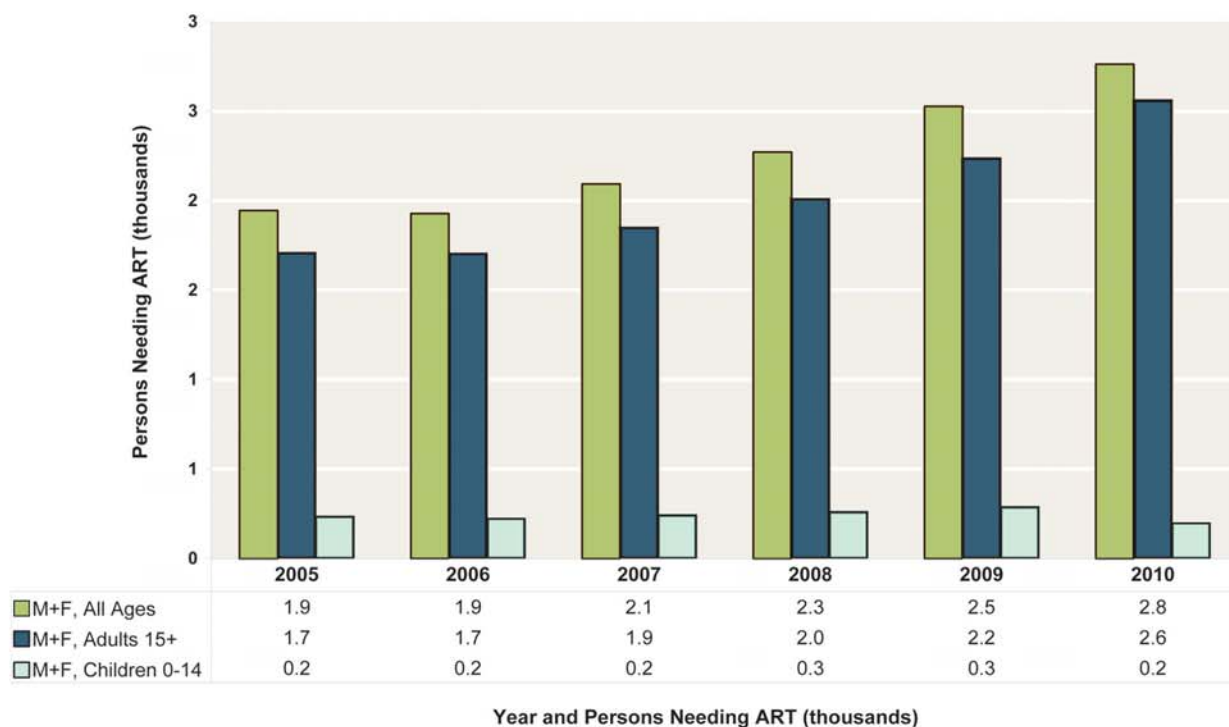


Figure 4B.4: Estimated and Projected Number of New HIV infections, New AIDS Cases, and Annual AIDS Deaths By Year, All Ages, Afar Urban

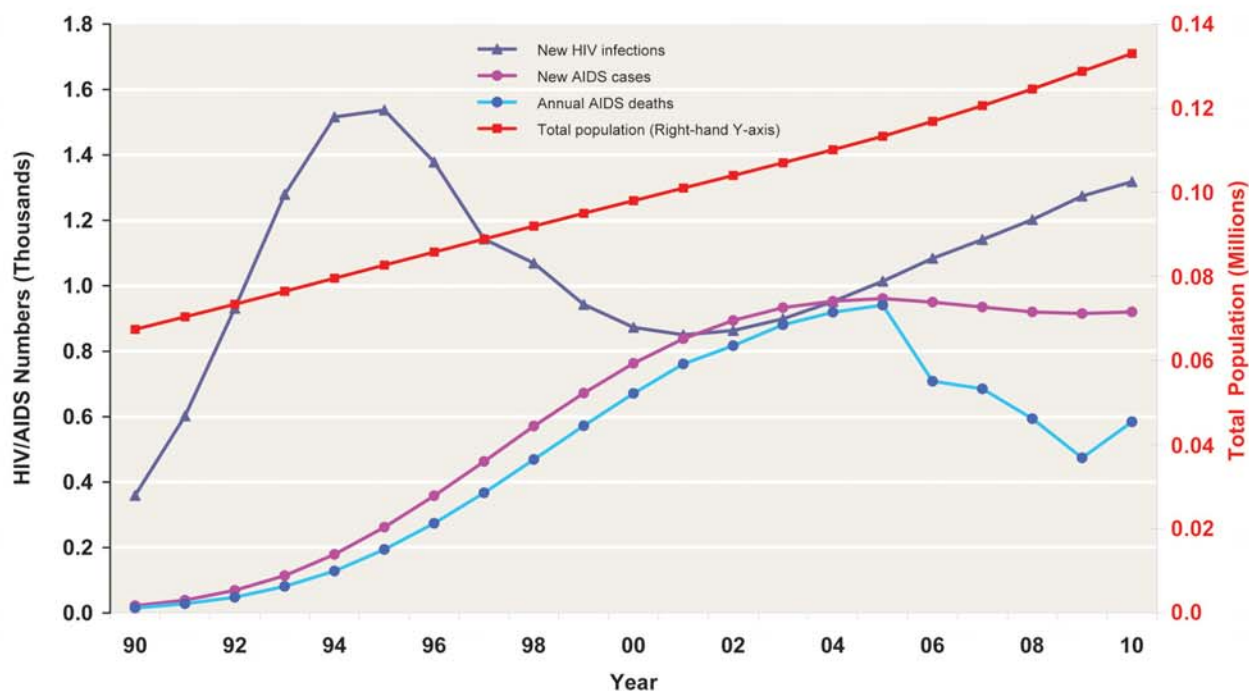
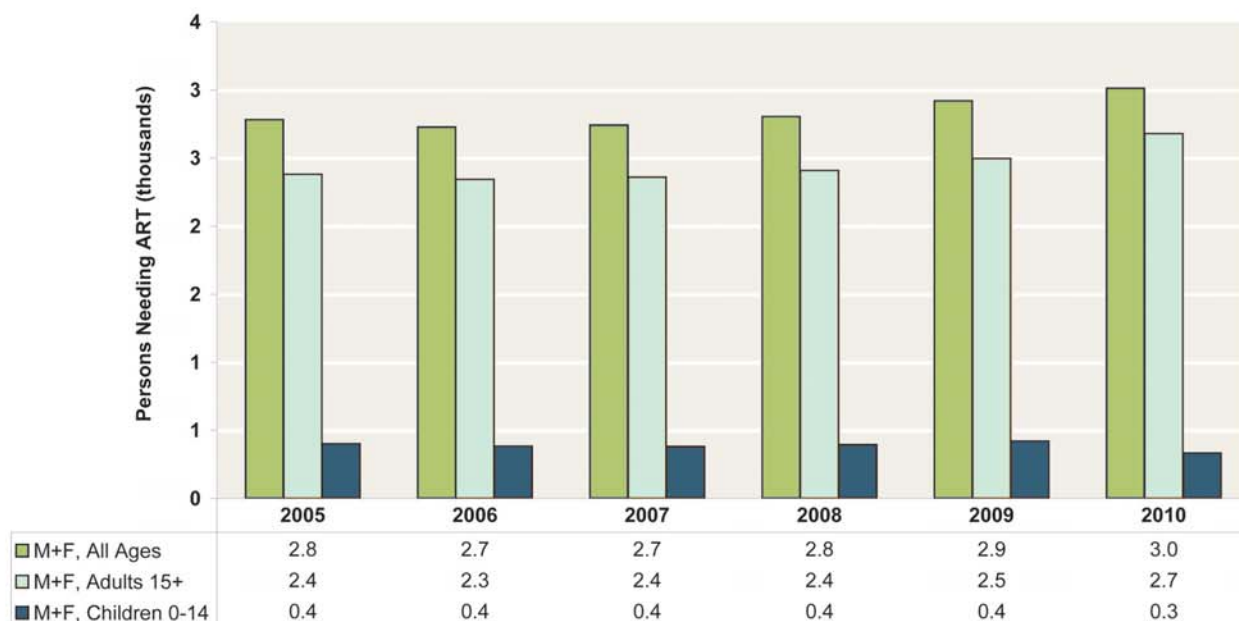


Table 4B3. Major HIV Indicators, Afar Rural

All Ages							
	2004	2005	2006	2007	2008	2009	2010
Adult prevalence (%)							
Total	1.9	1.8	1.7	1.6	1.6	1.5	1.5
Female	2.2	2.1	1.9	1.8	1.8	1.7	1.6
Male	1.7	1.6	1.5	1.4	1.3	1.3	1.3
HIV-pos population							
Total	13,158	12,798	12,437	12,245	12,195	12,299	12,556
Males	5,866	5,723	5,577	5,505	5,495	5,551	5,674
Females	7,292	7,075	6,860	6,740	6,700	6,748	6,882
HIV-pos pregnant women	1,021	977	937	912	897	896	911
Annual HIV-pos births	303	289	260	229	200	193	189
New HIV infections							
Total	1,077	1,096	1,118	1,155	1,193	1,254	1,315
Males	518	519	519	528	542	569	598
Females	559	577	599	627	651	685	717
Adult HIV incidence (%)	0.14	0.14	0.14	0.15	0.16	0.16	0.17
New AIDS cases							
Total	1,383	1,397	1,381	1,342	1,288	1,238	1,194
Males	627	629	619	602	582	565	551
Females	756	768	762	740	706	673	643
Annual AIDS deaths							
Total	1,331	1,375	1,254	1,157	1,054	963	936
Males	611	623	563	519	473	437	428
Females	720	752	691	638	581	526	508
Population increase	26,531	27,138	28,003	28,785	29,487	28,785	28,003
ART needs	2,786	2,783	2,729	2,744	2,806	2,921	3,014
Children (0-14 yrs)							
	2004	2005	2006	2007	2008	2009	2010
HIV population							
Total	1,197	1,246	1,282	1,313	1,332	1,342	1,326
Males	629	656	676	693	704	709	701
Females	568	590	606	620	628	633	625
New HIV infections							
Total	303	289	260	229	200	193	189
Males	154	147	132	116	101	98	96
Females	149	142	128	113	99	95	93
New AIDS cases							
Total	206	204	197	186	174	169	167
Males	106	105	101	96	90	88	86
Females	100	99	96	90	84	81	81
Annual AIDS deaths							
Total	200	198	175	156	139	154	158
Males	103	102	90	81	72	80	82
Females	97	96	85	75	67	74	76
ART Needs	412	402	384	383	396	423	334
Orphans (0-17 yrs)							
	2004	2005	2006	2007	2008	2009	2010
Maternal orphans							
AIDS	4,878	5,654	6,313	6,864	7,279	7,426	7,480
Non-AIDS	36,281	36,460	36,565	36,596	36,574	36,504	36,384
Total	41,159	42,114	42,878	43,460	43,853	43,930	43,864
Paternal orphans							
AIDS	3,188	3,623	4,061	4,482	4,850	5,002	5,101
Non-AIDS	37,948	38,381	38,786	39,146	39,465	39,724	39,935
Total	41,136	42,004	42,847	43,628	44,315	44,726	45,036
Dual orphans							
AIDS	2,914	3,227	3,492	3,705	3,858	3,871	3,835
Non-AIDS	8,676	8,685	8,675	8,643	8,592	8,520	8,427
Total	11,590	11,912	12,167	12,348	12,450	12,391	12,262
Total orphans	70,705	72,206	73,558	74,740	75,718	76,265	76,638
Total AIDS orphans	5,152	6,050	6,882	7,641	8,271	8,557	8,746

Note: Total orphans = Maternal orphans plus Paternal orphans less Dual orphans.

Figure 4B.5: Projected Annual No. of Patients Needing ART, by Sex and Age Group, 2005- 2010, Afar Rural



Year and Persons Needing ART (thousands)
(Figures rounded and may not add up to total)

Figure 4B.6: Estimated and Projected Number of New HIV infections, New AIDS Cases, and Annual AIDS Deaths By Year, All Ages, Afar Rural

