

4E: SOMALI



The HIV/AIDS Epidemic in Somali Region

Estimates and projections on HIV prevalence and incidence

The HIV prevalence for the region in 2005 was estimated at 1.2 % (1.4% in females and 1.1% in males). The HIV prevalence among the urban populations was estimated at 3.8% (4.3% in females and 3.3 % in males). The corresponding estimate among the rural population was 0.7 % (0.8% in females and 0.6 % in males). The estimated HIV incidence was 0.1% in 2005 (0.33 % in urban and 0.07 % in rural areas). The total HIV incidence is expected to remain stable up to 2010. In Somali region, the urban epidemic was characterized by a gradual increase up to 1994, a relative stability up to 1997 and a gradual decline in the past years. It is projected to continue to gradually decline in the coming few years. On the other hand, the rural epidemic showed an increasing trend up to 2002 and stability there after. Thus, the over all HIV prevalence for the region was stable between 1994 and 1998 where it began to decline. It is expected to continue for the coming few years.

Estimates and projections on the number of PLWHA , new infections, new AIDS cases and deaths in adults

A total of 28, 560 persons were estimated to be living with HIV/AIDS in the year 2005. The corresponding figures for estimated numbers of new HIV infections, new AIDS cases and AIDS deaths were 2, 865, 2,895 and 2, 890 respectively The estimated number of persons requiring ART for 2005 was 5, 813.

Estimates and projections on the numbers of HIV positive pregnancies and births

There were 2, 312 HIV-positive pregnancies in the region in 2005. Similarly, there were 616 HIV positive births in 2005. The numbers of HIV positive pregnancies and HIV positive births will be stable for the coming five years.

Estimates and projections on the numbers of PLWHA, new infections, new AIDS cases and deaths in children

It is estimated that there were a total of 3,035 children living with HIV, 616 new HIV infections, 469 new AIDS cases and 456 AIDS deaths among children in the region in 2005.

Estimates and projections on the numbers of AIDS orphans

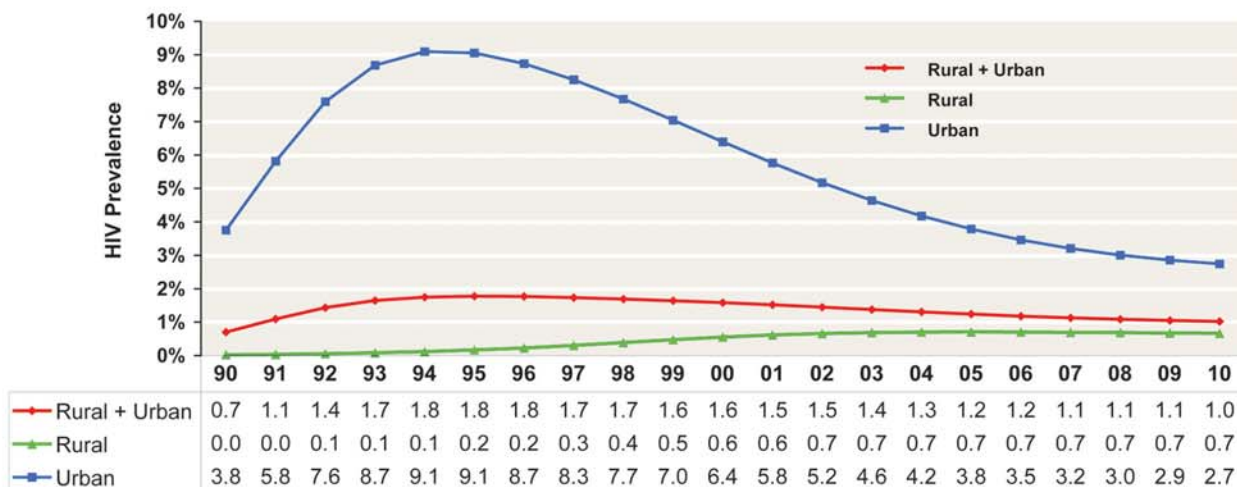
It was estimated that there were a total of 226, 673 orphans in the region in 2005. Of these, 21, 991 were AIDS orphans. Of the ADIS orphans, the majority were maternal orphans.

Table 4E1. Major HIV Indicators, Somali

All Ages							
	2004	2005	2006	2007	2008	2009	2010
Adult prevalence (%)							
Total	1.3	1.2	1.2	1.1	1.1	1.1	1.0
Female	1.5	1.4	1.3	1.3	1.2	1.2	1.2
Male	1.1	1.1	1.0	1.0	0.9	0.9	0.9
HIV-pos population							
Total	28,782	28,560	28,348	28,736	29,282	30,152	31,398
Males	12,860	12,778	12,698	12,886	13,146	13,543	14,105
Females	15,922	15,782	15,650	15,850	16,136	16,609	17,293
HIV-pos pregnant women	2,364	2,312	2,262	2,260	2,272	2,307	2,373
Annual HIV-pos births	633	616	543	486	432	422	420
New HIV infections							
Total	2,909	2,865	2,814	2,843	2,891	3,019	3,164
Males	1,336	1,320	1,295	1,312	1,335	1,388	1,449
Females	1,573	1,545	1,519	1,531	1,556	1,631	1,715
Adult HIV incidence (%)	0.10	0.10	0.10	0.10	0.10	0.10	0.10
New AIDS cases							
Total	2,911	2,895	2,848	2,801	2,752	2,722	2,703
Males	1,332	1,331	1,316	1,299	1,280	1,267	1,260
Females	1,579	1,564	1,532	1,502	1,472	1,455	1,443
Annual AIDS deaths							
Total	2,888	2,890	2,317	2,210	1,985	1,754	1,921
Males	1,317	1,322	1,068	1,021	920	818	898
Females	1,571	1,568	1,249	1,189	1,065	936	1,023
Population increase	118,824	121,695	125,203	128,328	131,453	128,328	125,203
ART needs	5,862	5,813	5,735	6,073	6,466	7,024	7,436
Children (0-14 yrs)							
HIV population	2004	2005	2006	2007	2008	2009	2010
Total	2,958	3,035	3,074	3,123	3,131	3,127	3,081
Males	1,533	1,573	1,594	1,620	1,625	1,622	1,598
Females	1,425	1,462	1,480	1,503	1,506	1,505	1,483
New HIV infections							
Total	633	616	543	486	432	422	420
Males	321	313	275	247	219	214	213
Females	312	303	268	239	213	208	207
New AIDS cases							
Total	466	469	445	420	392	378	372
Males	239	239	228	215	201	194	191
Females	227	230	217	205	191	184	181
Annual AIDS deaths							
Total	454	456	363	333	294	326	337
Males	233	234	186	171	151	167	174
Females	221	222	177	162	143	159	163
ART Needs	946	928	883	917	956	1,027	744
Orphans (0-17 yrs)							
Maternal orphans	2004	2005	2006	2007	2008	2009	2010
AIDS	14,764	16,007	16,914	17,537	17,846	17,546	17,299
Non-AIDS	106,700	108,085	109,215	110,072	110,694	111,096	111,280
Total	121,464	124,092	126,129	127,609	128,540	128,642	128,579
Paternal orphans							
AIDS	11,206	12,115	13,167	13,949	14,523	14,474	14,416
Non-AIDS	116,004	118,283	120,448	122,441	124,273	125,915	127,363
Total	127,210	130,398	133,615	136,390	138,796	140,389	141,779
Dual orphans							
AIDS	5,709	6,131	6,538	6,780	6,885	6,685	6,472
Non-AIDS	21,467	21,686	21,856	21,962	22,006	21,987	21,901
Total	27,176	27,817	28,394	28,742	28,891	28,672	28,373
Total orphans	221,498	226,673	231,350	235,257	238,445	240,359	241,985
Total AIDS orphans	20,261	21,991	23,543	24,706	25,484	25,335	25,243

Note: Total orphans = Maternal orphans plus Paternal orphans less Dual orphans.

Figure 4E.1 : Estimated and Projected HIV Prevalence By Year Adult Population 15-49, Urban, Rural, and Total Somali 1990-2010



Year and Estimated HIV Prevalence Values in Percent

Figure 4E.2: Estimated and Projected Number of New HIV infections, New AIDS Cases, and Annual AIDS Deaths By Year, All Ages, Total Somali

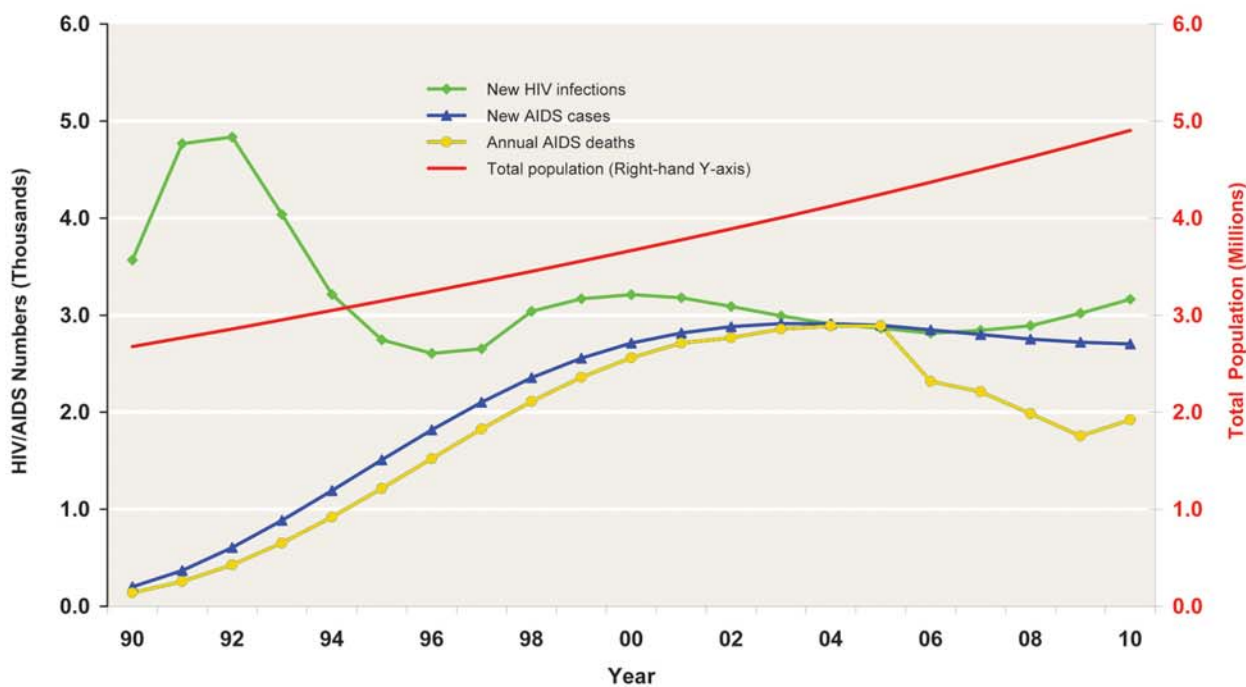


Table 4E2. Major HIV Indicators, Somali Urban

All Ages							
	2004	2005	2006	2007	2008	2009	2010
Adult prevalence (%)							
Total	4.2	3.8	3.5	3.2	3.0	2.9	2.7
Female	4.7	4.3	3.9	3.6	3.4	3.2	3.1
Male	3.6	3.3	3.0	2.8	2.6	2.5	2.4
HIV-pos population							
Total	15,847	15,062	14,423	14,374	14,453	14,786	15,394
Males	7,129	6,786	6,504	6,485	6,524	6,669	6,935
Females	8,718	8,276	7,919	7,889	7,929	8,117	8,459
HIV-pos pregnant women	1,203	1,127	1,064	1,049	1,046	1,059	1,094
Annual HIV-pos births	318	295	237	205	177	172	172
New HIV infections							
Total	1,320	1,320	1,294	1,315	1,330	1,389	1,453
Males	585	586	574	592	606	631	659
Females	735	734	720	723	724	758	794
Adult HIV incidence (%)	0.34	0.33	0.32	0.32	0.32	0.32	0.32
New AIDS cases							
Total	1,919	1,785	1,642	1,520	1,417	1,342	1,288
Males	856	806	752	706	666	635	612
Females	1,063	979	890	814	751	707	676
Annual AIDS deaths							
Total	2,018	1,895	1,316	1,204	995	784	924
Males	893	844	594	550	460	369	437
Females	1,125	1,051	722	654	535	415	487
Population increase	25,576	26,744	28,370	29,552	30,874	29,552	28,370
ART needs	3,757	3,494	3,243	3,358	3,489	3,736	3,944
Children (0-14 yrs)							
	2004	2005	2006	2007	2008	2009	2010
HIV population							
Total	2,082	2,060	2,011	1,974	1,907	1,834	1,742
Males	1,081	1,070	1,045	1,026	992	953	905
Females	1,001	990	966	948	915	881	837
New HIV infections							
Total	318	295	237	205	177	172	172
Males	161	150	120	104	90	87	87
Females	157	145	117	101	87	85	85
New AIDS cases							
Total	277	270	246	226	206	194	186
Males	142	138	126	116	106	100	96
Females	135	132	120	110	100	94	90
Annual AIDS deaths							
Total	270	263	185	169	144	158	162
Males	139	135	95	87	74	81	84
Females	131	128	90	82	70	77	78
ART Needs	557	529	488	513	529	560	373
Orphans (0-17 yrs)							
	2004	2005	2006	2007	2008	2009	2010
Maternal orphans							
AIDS	12,342	12,938	13,195	13,172	12,874	12,112	11,442
Non-AIDS	12,967	13,195	13,388	13,551	13,688	13,800	13,888
Total	25,309	26,133	26,583	26,723	26,562	25,912	25,330
Paternal orphans							
AIDS	9,301	9,752	10,314	10,586	10,660	10,247	9,850
Non-AIDS	13,933	14,303	14,659	14,970	15,253	15,499	15,708
Total	23,234	24,055	24,973	25,556	25,913	25,746	25,558
Dual orphans							
AIDS	4,942	5,165	5,363	5,390	5,287	4,929	4,572
Non-AIDS	1,819	1,841	1,860	1,869	1,871	1,866	1,852
Total	6,761	7,006	7,223	7,259	7,158	6,795	6,424
Total orphans	41,782	43,182	44,333	45,020	45,317	44,863	44,464
Total AIDS orphans	16,701	17,525	18,146	18,368	18,247	17,430	16,720

Note: Total orphans = Maternal orphans plus Paternal orphans less Dual orphans.

Figure 4E.3: Projected Annual No. of Patients Needing ART, by Sex and Age Group, 2005- 2010, Somali Urban

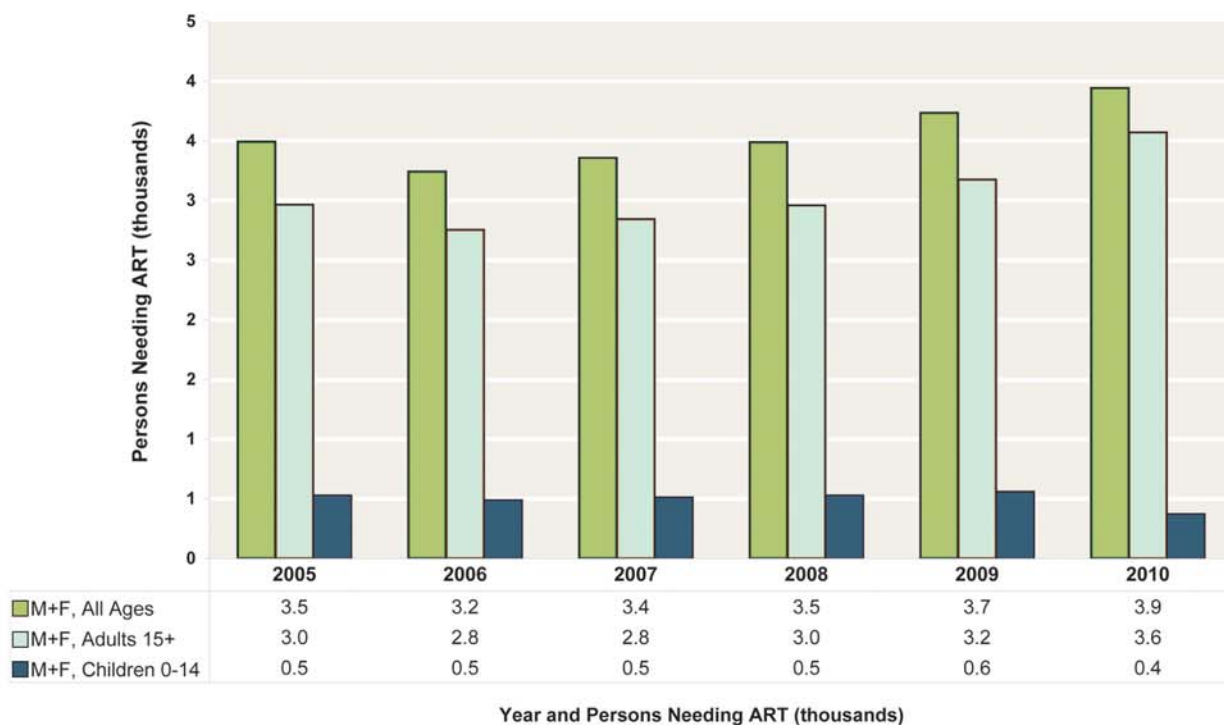


Figure 4E.4: Estimated and Projected Number of New HIV infections, New AIDS Cases, and Annual AIDS Deaths By Year, All Ages, Somali Urban

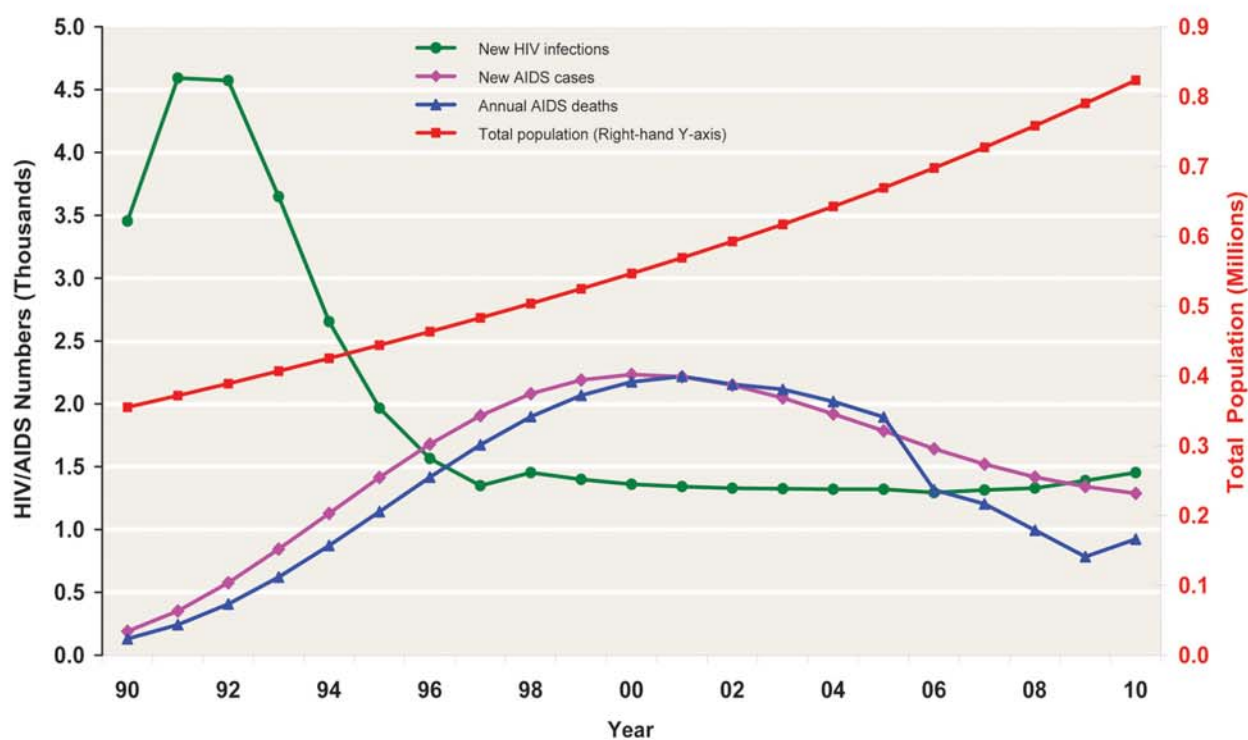


Table 4E3. Major HIV Indicators, Somali Rural

All Ages							
	2004	2005	2006	2007	2008	2009	2010
Adult prevalence (%)							
Total	0.7	0.7	0.7	0.7	0.7	0.7	0.7
Female	0.8	0.8	0.8	0.8	0.8	0.8	0.8
Male	0.6	0.6	0.6	0.6	0.6	0.6	0.6
HIV-pos population							
Total	12,935	13,498	13,925	14,362	14,829	15,366	16,004
Males	5,731	5,992	6,194	6,401	6,622	6,874	7,170
Females	7,204	7,506	7,731	7,961	8,207	8,492	8,834
HIV-pos pregnant women	1,161	1,185	1,198	1,211	1,226	1,248	1,279
Annual HIV-pos births	315	321	306	281	255	250	248
New HIV infections							
Total	1,589	1,545	1,520	1,528	1,561	1,630	1,711
Males	751	734	721	720	729	757	790
Females	838	811	799	808	832	873	921
Adult HIV incidence (%)	0.08	0.07	0.07	0.07	0.07	0.07	0.08
New AIDS cases							
Total	992	1,110	1,206	1,281	1,335	1,380	1,415
Males	476	525	564	593	614	632	648
Females	516	585	642	688	721	748	767
Annual AIDS deaths							
Total	870	995	1,001	1,006	990	970	997
Males	424	478	474	471	460	449	461
Females	446	517	527	535	530	521	536
Population increase	93,248	94,951	96,833	98,776	100,579	98,776	96,833
ART needs	2,105	2,319	2,492	2,715	2,977	3,288	3,492
Children (0-14 yrs)							
	2004	2005	2006	2007	2008	2009	2010
HIV population							
Total	876	975	1,063	1,149	1,224	1,293	1,339
Males	452	503	549	594	633	669	693
Females	424	472	514	555	591	624	646
New HIV infections							
Total	315	321	306	281	255	250	248
Males	160	163	155	143	129	127	126
Females	155	158	151	138	126	123	122
New AIDS cases							
Total	189	199	199	194	186	184	186
Males	97	101	102	99	95	94	95
Females	92	98	97	95	91	90	91
Annual AIDS deaths							
Total	184	193	178	164	150	168	175
Males	94	99	91	84	77	86	90
Females	90	94	87	80	73	82	85
ART Needs	389	399	395	404	427	467	371
Orphans (0-17 yrs)							
	2004	2005	2006	2007	2008	2009	2010
Maternal orphans							
AIDS	2,422	3,069	3,719	4,365	4,972	5,434	5,857
Non-AIDS	93,733	94,890	95,827	96,521	97,006	97,296	97,392
Total	96,155	97,959	99,546	100,886	101,978	102,730	103,249
Paternal orphans							
AIDS	1,905	2,363	2,853	3,363	3,863	4,227	4,566
Non-AIDS	102,071	103,980	105,789	107,471	109,020	110,416	111,655
Total	103,976	106,343	108,642	110,834	112,883	114,643	116,221
Dual orphans							
AIDS	767	966	1,175	1,390	1,598	1,756	1,900
Non-AIDS	19,648	19,845	19,996	20,093	20,135	20,121	20,049
Total	20,415	20,811	21,171	21,483	21,733	21,877	21,949
Total orphans	179,716	183,491	187,017	190,237	193,128	195,496	197,521
Total AIDS orphans	3,560	4,466	5,397	6,338	7,237	7,905	8,523

Note: Total orphans = Maternal orphans plus Paternal orphans less Dual orphans.

Figure 4E.5: Projected Annual No. of Patients Needing ART, by Sex and Age Group, 2005- 2010, Somali Rural

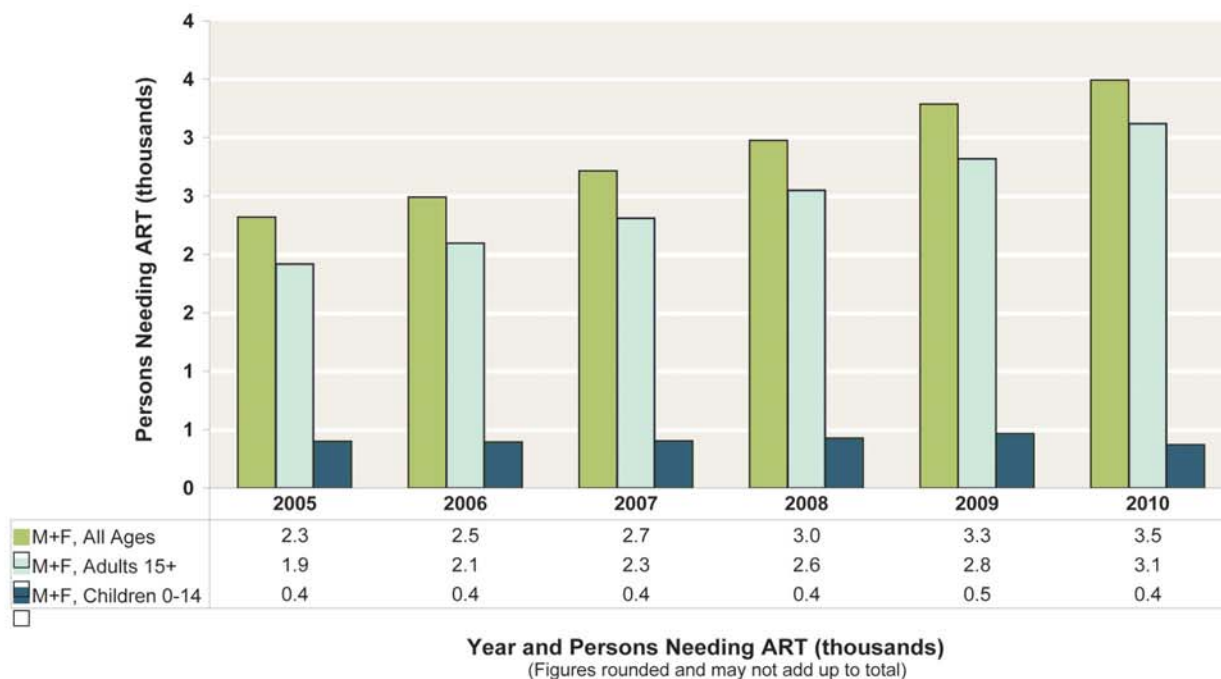


Figure 4E.6: Estimated and Projected Number of New HIV infections, New AIDS Cases, and Annual AIDS Deaths By Year, All Ages, Somali Rural

